

PURPL PRO

INSTANT CANNABIS POTENCY MEASUREMENT

Purpl PRO brings the power of a laboratory to the field. The chemical composition of the cannabis sample can be determined in a blink of an eye.



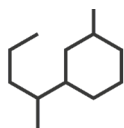
UNLIMITED TESTS



AFFORDABLE



SIMPLE TO USE



CONSISTENT &
ACCURATE

AFFORDABLE

Our self-developed and robust near-infrared spectral sensor measures reliably even in the most demanding environments. The miniaturized device offers excellent measurement performance at a fraction of the cost of other laboratory.

SIMPLE

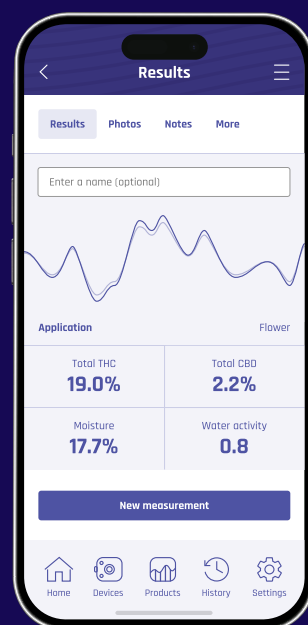
With just a few clicks on your smartphone, you get an instant analysis of the sample (ground flowers, hashish, distillates). The Purpl PRO provides a complete picture of THC, CBD, moisture and more.

ACCURATE

Our sensor uses a patented microelectromechanical system (MEMS) Fabry-Perot interferometer, integrated light sources and readout and control electronics, which guarantees an extremely stable output. This enables laboratory-level accuracy.

Turn your mobile phone into
a state-of-the-art Potency
Measurement System.

purplscientific.com



PURPL
SCIENTIFIC

PURPL PRO

INSTANT CANNABIS POTENCY MEASUREMENT

CLARITY FOR THE CANNABIS INDUSTRY

Our products reveal the quality and chemical composition of cannabis - throughout its lifecycle, from cultivation to consumption.



CULTIVATORS



DISTRIBUTORS



MANUFACTURER



EXTRACTORS



DISPENSARIES



CONSUMERS

SIMPLE TO USE

We have designed the Purpl PRO to be mobile, fast, accurate and user-friendly: the measurement results are available anytime and anywhere.

1 1 |
Open App

1 2 |
Calibrate

1 3 |
Measure



PURPL PRO
APP

PURPL PRO
DEVICE



PURPL
SCIENTIFIC

ABOUT PURPL

Purpl Scientific (Purpl) is an innovative company dedicated to the advancement of the cannabis industry. We pack a ton of technology into our pocket lab that can be operated with just a few clicks.

sales@purplscientific.com
purplscientific.com